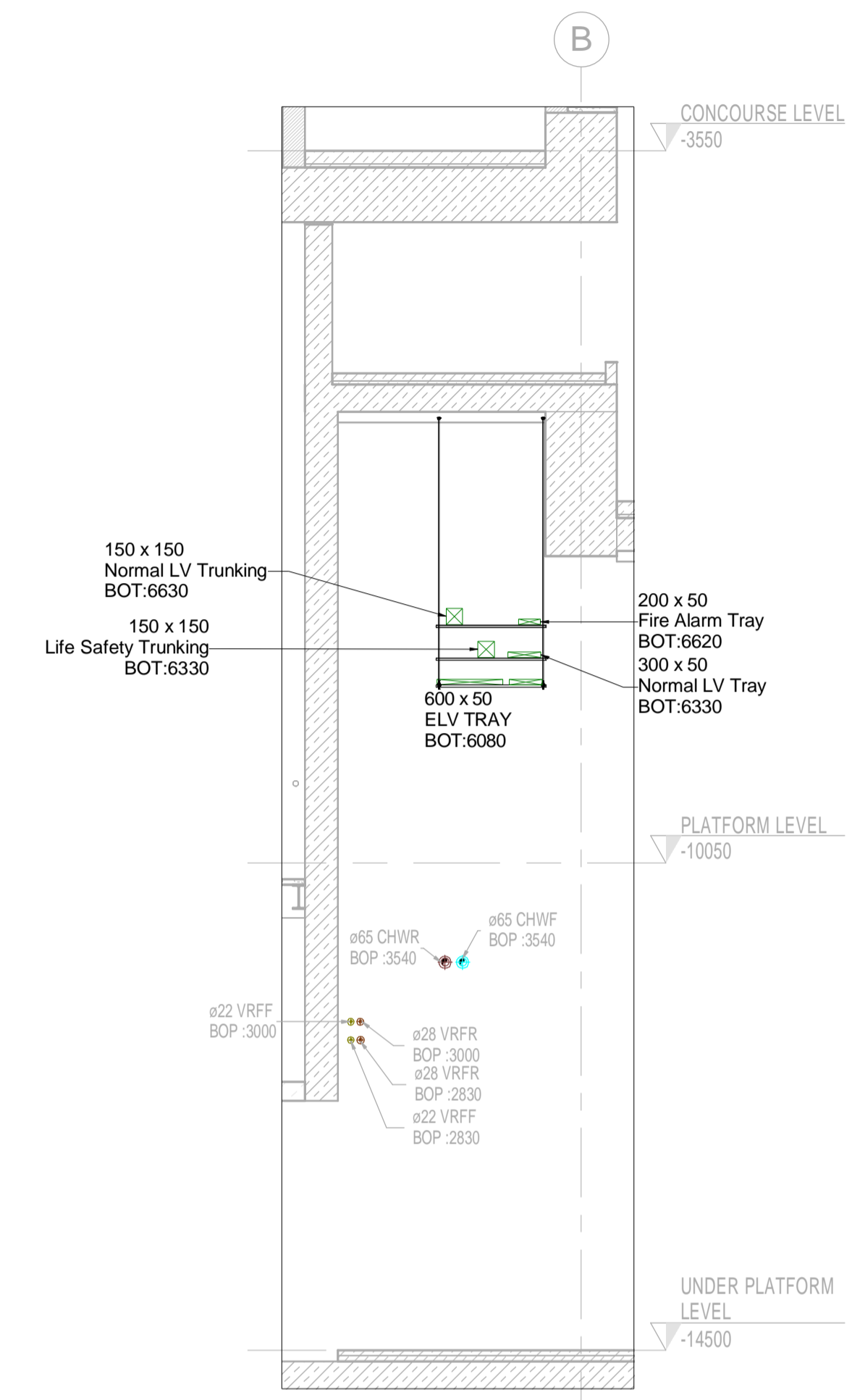
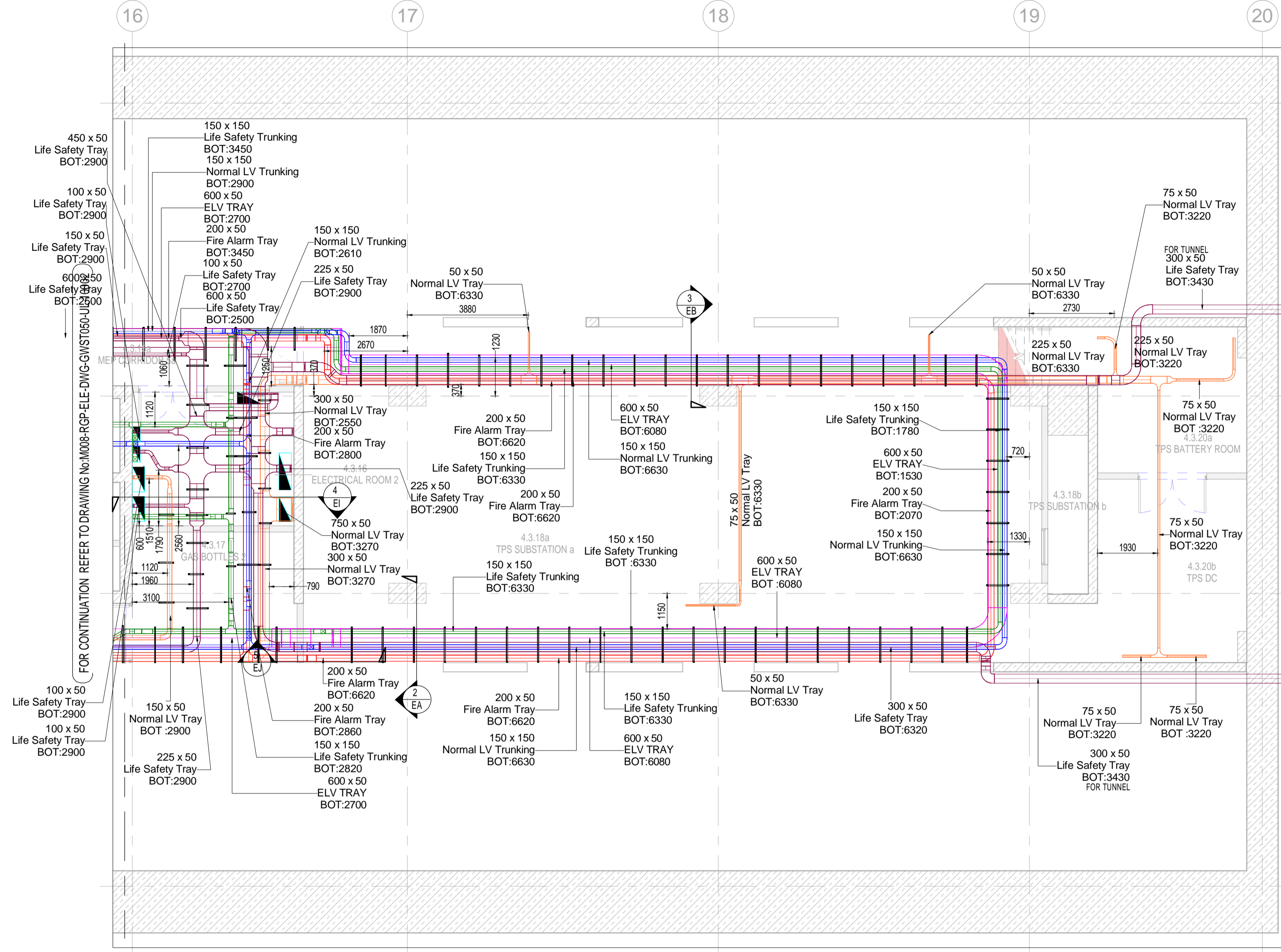
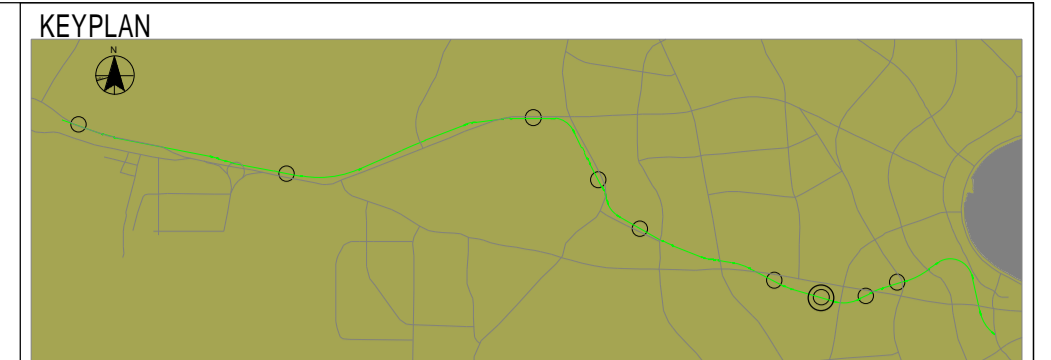
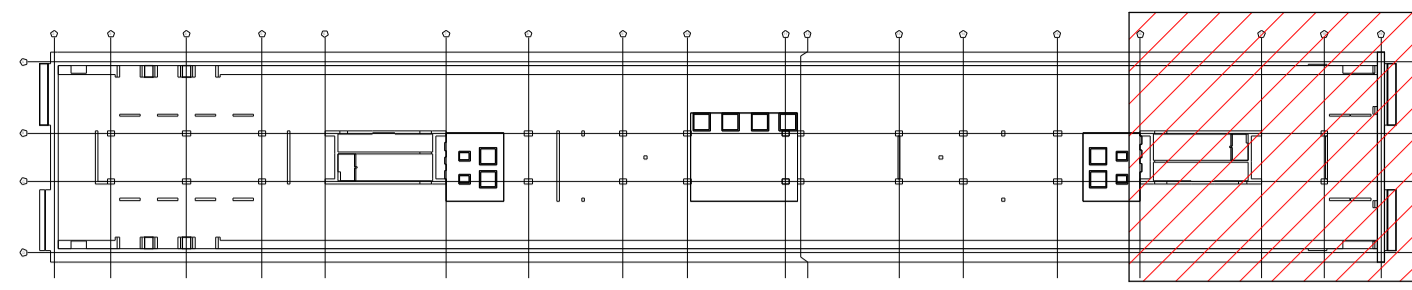
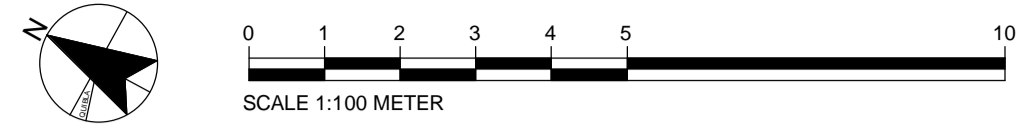


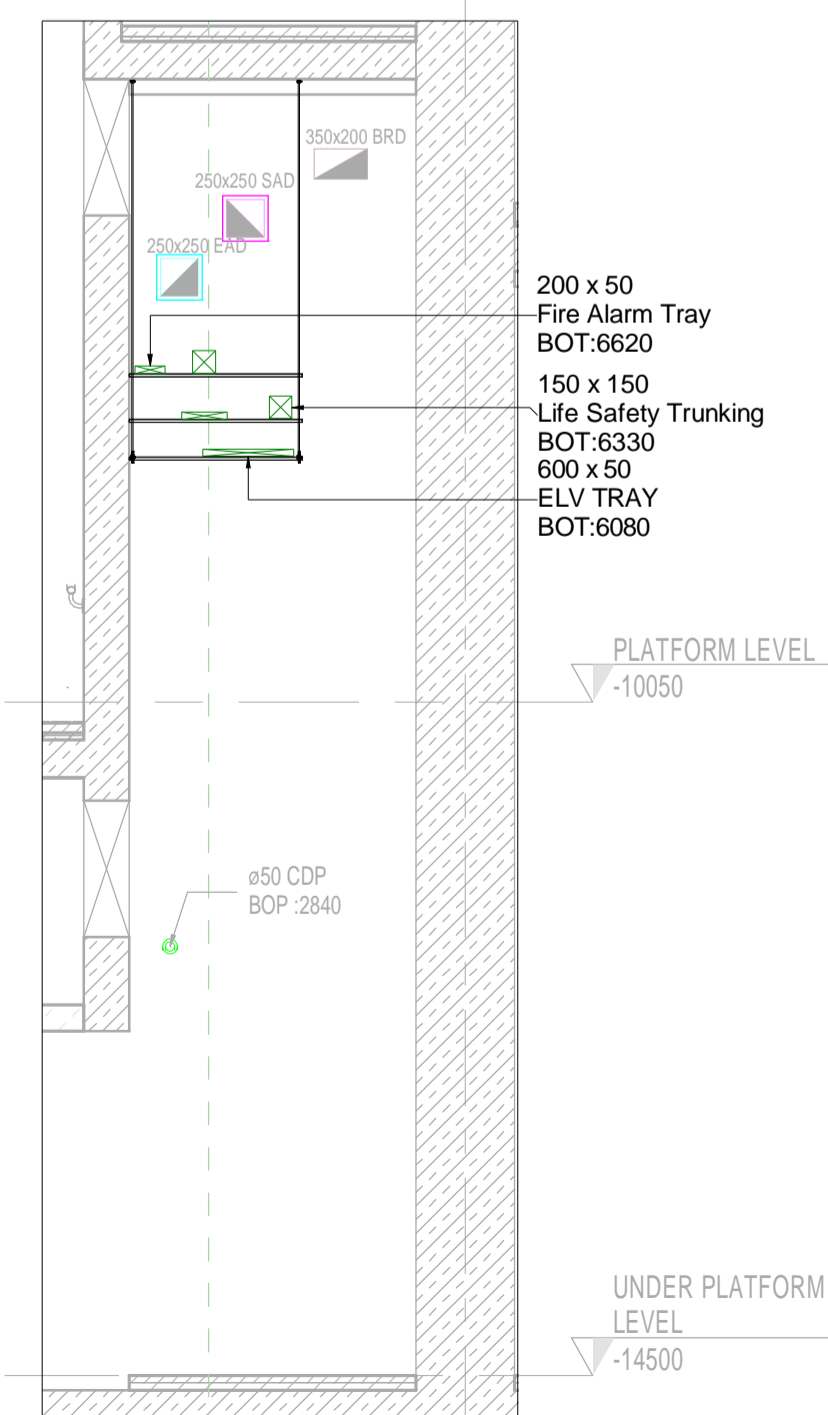
This drawing and any information or descriptive matter set out hereon is licensed to the Qatar Railways Company and is confidential and subject to copyright. It must not be disclosed, loaned, copied or used for manufacturing, tendering or for any other purpose without written permission. © Qatar Railways Company.



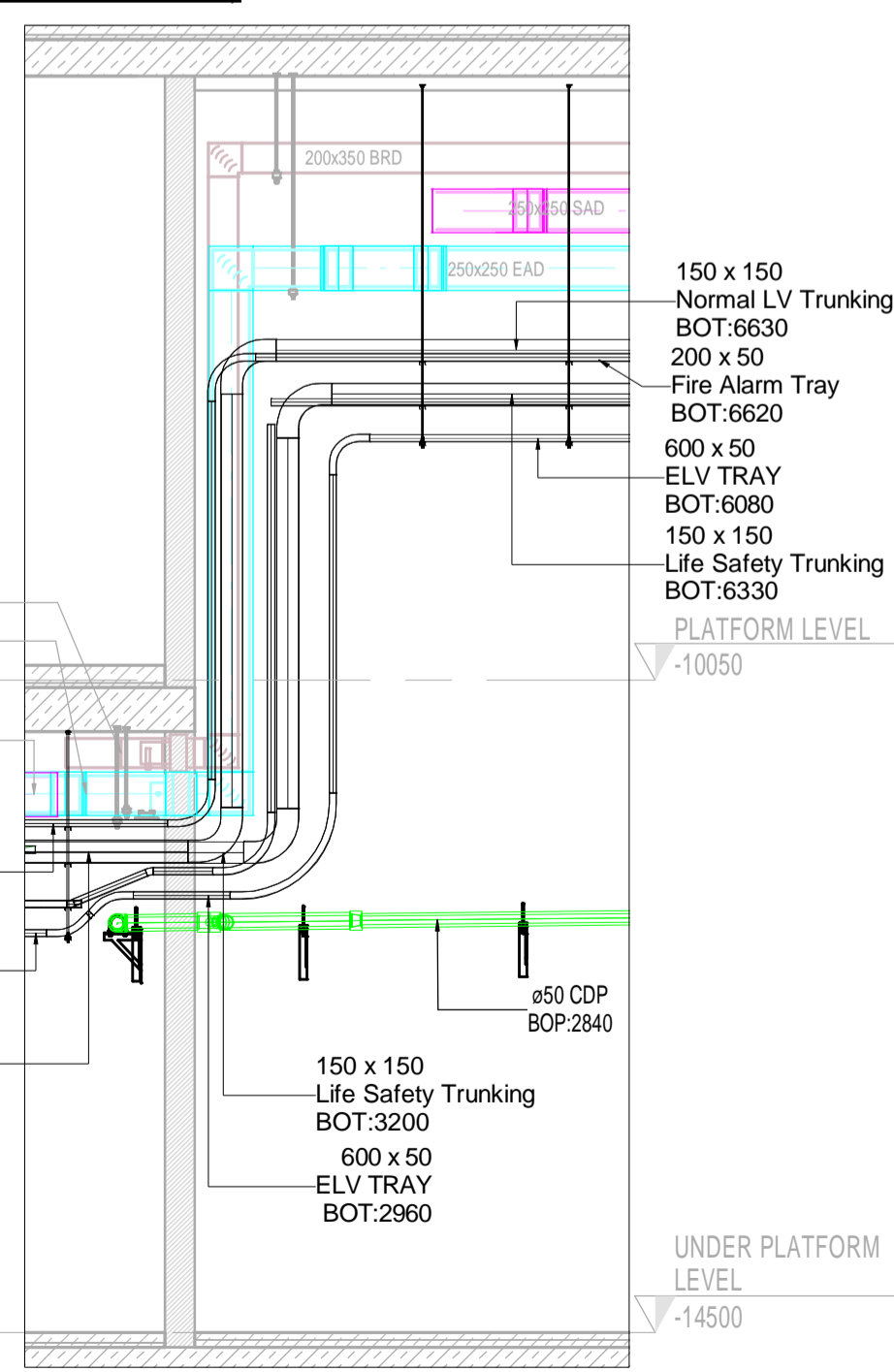
SECTION-EB
SCALE : 1:50

SHOP DRAWINGS STATION - AL RAYYAN / AL QADEEM UNDER PLATFORM LEVEL - CONTAINMENT DISTRIBUTION ROUTES (STATION EAST)

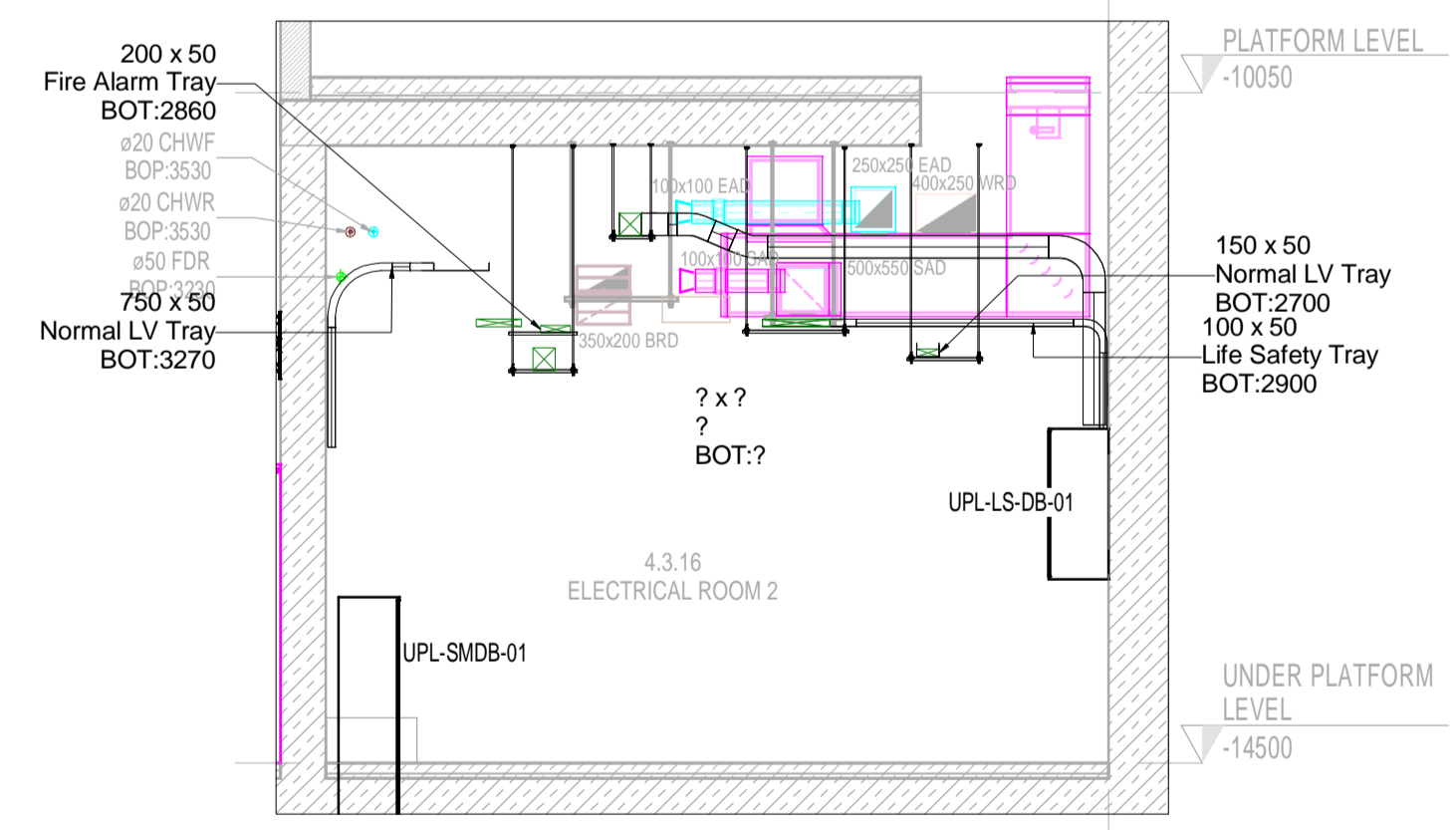
SCALE : 1:100



SECTION-EA
SCALE : 1:50



SECTION-EJ
SCALE : 1:50



SECTION-EI
SCALE : 1:50

CABLE TRAY/TRUNKING SUPPORTS SCHEDULE

CABLE TRAY WIDTH	SPACE BETWEEN SUPPORTS (UPTO 300MM WIDTH TRAY)		SPACE BETWEEN SUPPORTS(LARGER THAN 300MM WIDTH TRAY)		SUPPORTS ON BOTH SIDE OF JOINT/ COUPLE	SUPPORTS NEAT FITTING (BENDS, TEES, INTERSECTIONS AND RISERS ON BOTH SIDES)	SPACE BETWEEN CABLE TRAY ARRANGED ONE ABOVE THE OTHER	THREADED ROD SIZE
	HORIZONTAL	VERTICAL	HORIZONTAL	VERTICAL				
125mm	1200mm	1100mm	-	-	1.2mm	150mm	150mm	M12*
<300mm	1200mm	1100mm	-	-	1.2mm	150mm	150mm	M12*
>300mm	-	-	1000mm	900mm	1.2mm	150mm	150mm	M12*

*NOTE: THREADED ROD - M10 FOR SINGLE TRUNKING ONLY

CONTAINMENT COLOUR CODING

[Red Box]	FIRE ALARM CABLE TRAY
[Orange Box]	NORMAL LV CABLE TRAY
[Pink Box]	LIFE SAFETY CABLE TRAY
[Blue Box]	LV TRUNKING
[Light Blue Box]	LS TRUNKING
[Green Box]	ELV CABLE TRAY

F/A FROM ABOVE
F/B FROM BELOW
T/A TO ABOVE
T/B TO BELOW
HL HIGH LEVEL
BOT BOTTOM OF TRAY

- NOTES**
- ALL MEASUREMENTS ARE IN MILLIMETERS UNLESS OTHERWISE STATED.
 - THE ELECTRICAL DRAWINGS SHALL BE READ IN CONJUNCTION WITH ALL RELEVANT ARCHITECTURAL, STRUCTURAL, MECHANICAL AND SPECIALIST DRAWINGS AND SPECIFICATIONS.
 - THE ENTIRE CABLE TRAY SYSTEM SHALL BE BONDED AND 12 MM X 2.5 MM TINNED COPPER LINKS SHALL BE BOLTED ACROSS EACH JOINT IN THE SYSTEM BY MEANS OF BRONZE NUT AND BOLTS, COMPLETE WITH FLAT AND SPRING WASHERS.
 - ALL LEVELS ARE CLEARLY MENTIONED IN THE DRAWINGS AND IN SECTIONS.
 - ALL CONTAINMENT HAS BEEN SIZED AS BASED ON CABLING SPACED 0.5 DIAMETER APART AND WITH AN ALLOWANCE OF 20% SPARE CAPACITY.
 - HIGH LEVEL SERVICES SHALL NOT BE INSTALLED ANY LOWER THAN 2800 MM ABOVE FINISHED FLOOR LEVEL.
 - DRAFTING ERRORS AND DIFFERENCE BETWEEN OTHER DRAWINGS SHALL BE BROUGHT TO ATTENTION FOR RECTIFICATION.
 - BRANCHES & THEIR SIZE CALCULATIONS FOR EACH ELECTRICAL SERVICES SHALL BE SHOWN IN THEIR RESPECTIVE PLANS.
 - THE HANGER SPACING SHOW IS INDICATIVE USE MANUFACTURER APPROVED SUPPORT SPACING SCHEDULE FOR HANGER INSTALLATION.

- REFERENCES:**
- M008-ARE-ARC-MD3-GWST050-CL-00101.S4.P7
 - M008-ARE-ARC-MD3-GWST050-ZZ-00101.S4.P11
 - M008-HQ-MEP-MD3-GWST050-PL-00101.RVT
 - M008-SSF-ARC-MD3-GWST050-CL-00301.S3.P16
 - M008-SSF-ARC-MD3-GWST050-ZZ-00101.S3.P19
 - M008-SSF-STR-MD3-GWST050-CL-00301.S3.P14
 - M008-SSF-STR-MD3-GWST050-ZZ-00101.S3.P24
- SCHEMATICS AND DETAIL INSTALLATION REFERENCES :**
- M008-HQ-ELE-DWG-GWST050-AA-30001
 - M008-HQ-ELE-DWG-GWST050-AA-30002
 - M008-RGP-ELE-DWG-GWST050-UL-10501
 - M008-RGP-ELE-DWG-GWST050-UL-10504

ISSUED FOR CONSTRUCTION

NO.	DATE	BY	REVISION
C2	30-12-2017	JF	IM
C1	13-11-2016	IM	MN

ISSUED FOR CONSTRUCTION APPROVAL

NO.	DATE	BY	REVISION
C2	30-12-2017	JF	IM
C1	13-11-2016	IM	MN

CLIENT APPROVAL

NO.	DATE	BY	REVISION
A			
B			
C			

STATUS

NO.	DATE	BY	REVISION
S4			

CONTRACTOR
PORR - SBG - HBK JOINT VENTURE
 P.O. BOX 207471 DOHA QATAR

CONSULTANT:
 HOARE LEA QATAR LLC
 P.O. BOX 201834 DOHA QATAR

SUB CONTRACTOR
 PSC S.P.A.
 Viale Schiavonetti 27/28 - 00173 ROMA
 TEL: 06/72630488
 FAX: 06/72671393
 Website: www.pscpospoc.com
 QATAR - ITALY

PROJECT
DESIGN & BUILD PACKAGE 4
GREEN LINE UNDERGROUND

TITLE
SHOP DRAWINGS STATION - AL RAYYAN / AL QADEEM UNDER PLATFORM LEVEL - CONTAINMENT DISTRIBUTION ROUTES (STATION EAST)

CLIENT
 QATAR RAILWAYS COMPANY
 P.O. BOX 29988 DOHA QATAR

DRAWING NUMBER
 M008-RGP-ELE-DWG-GWST050-UL-10001